

Pocket

original blue





Civilization of Beauty



original blue





original blue





Civilization of Beauty



original blue





Civilization of Beauty



24,5x24,5 BLACKSTONE bur





Civilization of Beauty



original blue





Civilization of Beauty



50x50 BLACKSTONE nat . 24,5x24,5 BLACKSTONE bur . 32,6x32,6 MOSAICO BLACKSTONE nat ret .
16,2x49 MURETTO BLACKSTONE nat ret

ORIGINAL BLUE

SPESSORE - THICKNESS - ÉPAISSEUR - STÄRKE - ESPESOR - ТОЛЩИНА **12mm**

BLACKSTONE

GRES PORCELLANATO A TUTTA MASSA. FULL BODY PORCELAIN TILES. GRES CERAME PLEINE MASSE. FEINSTEINZEUG VOLLE MASSE. GRES PORCELÁNICO CON COLORACIÓN EN MASA. ГОМОГЕННЫЙ КЕРАМОГРАНИТ. NATURAL AND RECTIFIED. NATUREL ET RECTIFIÉ. NATUR OBERFLÄCHE UND KALIBRIERT. NATURAL Y RECTIFICADO. ФУНДОВАНИЕ КОПИ АККРЕВАН. НАТУРАЛЬНЫЙ И РЕКТИФИЦИРОВАННЫЙ.



B110 5744 Blackstone 50x50 . 19 15/16"x19 15/16" Nat. ■

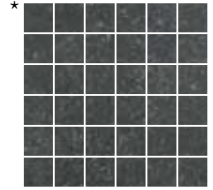
B180 5844 Blackstone 49x49 . 19 15/16"x19 15/16" Nat. Ret. □



B205 3944 Blackstone 33x49 . 13"x19 15/16" Nat. Ret. □



B220 W054 Blackstone 16,2x49 . 6 3/8"x19 15/16" Nat. Ret. □



B290 9274 Mosaico Blackstone 32,6x32,6 . 12 7/8"x12 7/8" Nat. Ret. □



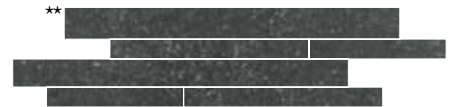
B210 2364 Blackstone 24,5x24,5 . 9 1/2"x9 1/2" Nat. Ret. □



B253 Q364 Blackstone 24,5x24,5 . 9 1/2"x9 1/2" bur. ▲

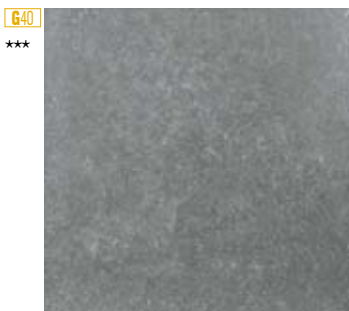


B250 Q054 Blackstone 16,2x16,2 . 6 3/8"x6 3/8" bur. ▲



B290 L744 Muretto su rete Blackstone 16,2x49 . 6 3/8"x19 15/16" Nat. Ret. □

GREYSTONE



B110 5743 Greystone 50x50 . 19 15/16"x19 15/16" Nat. ■

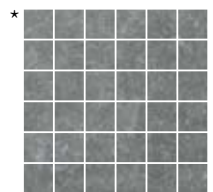
B180 5843 Greystone 49x49 . 19 15/16"x19 15/16" Nat. Ret. □



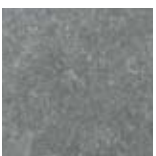
B205 3943 Greystone 33x49 . 13"x19 15/16" Nat. Ret. □



B220 W053 Greystone 16,2x49 . 6 3/8"x19 15/16" Nat. Ret. □



B290 9273 Mosaico Greystone 32,6x32,6 . 12 7/8"x12 7/8" Nat. Ret. □



B210 2363 Greystone 24,5x24,5 . 9 1/2"x9 1/2" Nat. Ret. □



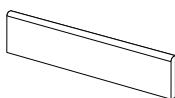
B253 Q363 Greystone 24,5x24,5 . 9 1/2"x9 1/2" bur. ▲



B250 Q053 Greystone 16,2x16,2 . 6 3/8"x6 3/8" bur. ▲

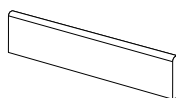


B290 L743 Muretto su rete Greystone 16,2x49 . 6 3/8"x19 15/16" Nat. Ret. □



BATTISCOPIA Nat. **V130**
8x50 - 3 3/8"x19 15/16" ■ **21 PCS**

B744 Blackstone
B743 Greystone



BATTISCOPIA Nat. Ret. **V130**
8x49 - 3 3/8"x19 15/16" □ **21 PCS**

B844 Blackstone
B843 Greystone

Note. Notes. Remarques. Hinweise. Notes:

*Non è modulare con il 24,5x24,5 e 50x50 - Not modular with 24,5x24,5 and 50x50 formats. - N'est pas modulaire avec les formats 24,5x24,5 et 50x50. - Nicht modular zu 24,5x24,5 und 50x50. - No es modular con el 24,5x24,5 y el 50x50. - Niet moduleerbaar met 24,5x24,5 en 50x50.

**Non è modulare con il 50x50 - Not modular with 50x50 format. - N'est pas modulaire avec les formats 50x50. - Nicht modular zu 50x50. - No es modular con el 50x50. - Niet moduleerbaar met 50x50.

***Per posa modulare a 4 formati. - For 4 format modular installation. - Pour pose modulaire à 4 formats. - Zur modularen Verlegung in 4 Formaten. - Para colocación modular de 4 formatos. - Voor modulair legstelsel in 4 formaten.

"Le vendite di materiale si effettuano a scatole intere" - "The material is sold only in full boxes" - "Le matériel est vendu par boîtes entières" - "Der Verkauf des Materials erfolgt in ganzen Kartons" - "Las ventas de material se efectúan por cajas enteras."

SHADE SPECTRUM

Low Moderate Blackstone High Graystone Random

R10

SCIVOLOSITÀ
SLIPPERY GRADE

Dry $\geq 0,84$
Wet $\geq 0,62$

COEFFICIENT
OF FRICTION

ASTM C
1028-6

* FORMATO cm. Size	PZ. X SCAT. Pieces x Box	MQ. X SCAT. Sq.m x Box	KG X SCAT. Weight x Box	EUROPALLET 80x120 cm			
				SCAT. X PAL. Boxes x Pal.	MQ. X PAL. Sq.m x Pal.	KG X PAL. Weight x Pal.	Cm. h Pal.
50x50	4	1	25	26	26	670	65
49x49	4	0,96	24	26	24,96	644	64
33x49	5	0,8	20	48	38,4	980	81
16,2x49	10	0,8	20	48	38,4	980	85
24,5x24,5	16	0,96	24	54	51,84	1320	90
24,5x24,5 bur	16	0,96	24	54	51,84	1320	90
16,2x16,2 bur	24	0,63	16	64	40,32	1044	81
mos. 32,6x32,6	5	0,53	12,7	60	31,8	782	75
mur. 16,2x49	5	0,4	10	70	28	720	80
batt. 8x49-8x50	21	-	20,5 - 21	-	-	-	-

